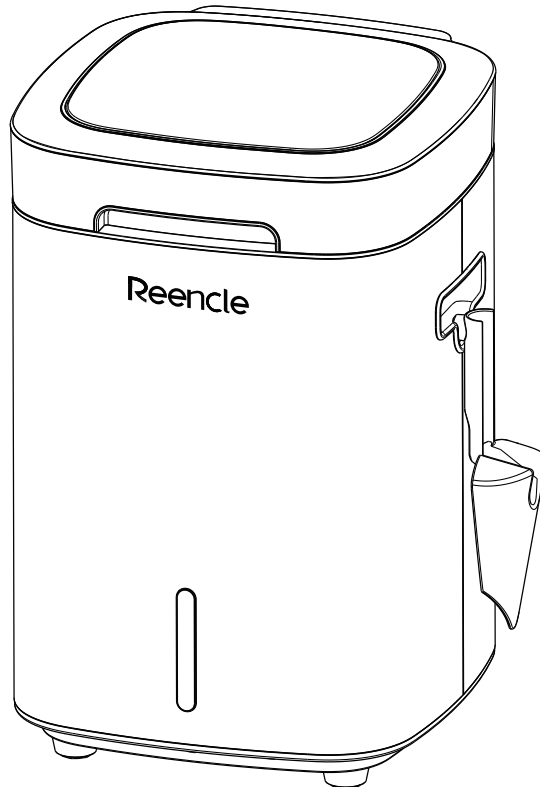


# Reencle Prime Food Waste Composter

---

## User Manual





# Contents

<b>01. Safety Precautions</b>	3	<b>06. Acceptable &amp; Prohibited Food Waste</b>	13
<b>02. Meet Reencle Prime</b>	5	<b>07. Managing Microorganism Byproduct/Compost</b>	14
<b>03. Initial Setup</b>	6	<b>08. Frequently Asked Questions</b>	15
<b>04. Part Names &amp; Features</b>	8	<b>09. Replacement Alerts &amp; Warnings</b>	18
<b>05. Ongoing Use &amp; Operation</b>	10	a. Alerts, indications, and responses	
a. Open the Small Lid		b. Customer service	
b. Add Food Scraps		<b>10. Warranty &amp; Specifications</b>	19
c. Maintain Food Waste Input			
d. Manage Internal Contents			
e. Open the Large Lid			
f. Tips for Proper Care			

**Please read the following instructions carefully before use.**

*\* This Instruction Manual contains Reencle Warranty*

*\* This Warranty does not apply to non-Reencle branded products, even if packaged or sold with Reencle hardware*

*\* This Warranty is governed by and construed under the laws of the country in which the Reencle product purchase took place.*

*\* Warranty Service will be limited to the options available in the country where service is requested. Service options, parts availability and response times may vary according to country.*

# 01. Safety Precautions

## \*IMPORTANT SAFETY INSTRUCTIONS



**WARNING:** Your safety is important to us. Read this guide carefully for important usage and safety information, and strictly follow the safety rules. Proper and safe use of your Reencle Prime is your responsibility. To reduce the risk of fire, electrical shock, injury to persons or damage when using your Reencle Prime, follow basic safety precautions including the following:



**Note: Power cord and voltage will vary by country.**

*\*This appliance is not intended for use by persons (including children) with reduced physical, sensory, or mental capabilities, or lack of experience and knowledge, unless they have been given supervision or instruction concerning use of the appliance by a person responsible for their safety.*

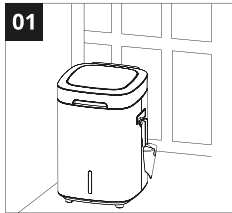
- Read this guide before using your Food Waste Composter.
- Use your Food Waste Composter only as described in this manual.
- Use only with supplied attachments.
- To reduce the risk of electrical shock, do not use outdoors or on wet surfaces.
- Disconnect electrical supply before servicing or cleaning the inside of the chamber. Failure to do so could result in injury from electrical shock.
- Always turn off the power button before unplugging.
- Do not use the Food Waste Composter if it is not working as it should, if it has been dropped, damaged, left outdoors or dropped into water.
- To unplug, grasp the plug, not the cord; do not unplug by pulling on the cord.
- Do not use with a damaged cord or plug.
- Do not pull or carry the Food Waste Composter by its cord, use cord as a handle, close a door on cord, or pull cord around sharp edges or corners.
- Keep cord away from heated surfaces.
- Do not allow Food Waste Composter to be used as a toy. Close attention is necessary when used by or near children.
- Do not handle plug or Food Waste Composter with wet hands.
- Avoid putting any plastics, glass, metals, wood, chopsticks, biodegradable containers or flatware, bones, or other materials that people cannot eat in the Food Waste Composter.

- Keep hair, loose clothing, fingers and all parts of the body away from openings and moving parts.
- When it's time to remove compost from your Reencle, always maintain enough of the compost/microorganism mix so it reaches the "Minimum Line." Never remove compost in full from the bin.
- Once the inner contents of the Reencle reach the "Maximum Line" remove the compost. Do not continue to add more food scraps until the inner contents are below the Maximum Line.
- Do not eat the contents of the Food Waste Composter.
- Children should be supervised to ensure that they do not play with the appliance or its contents.
- If the supply cord is damaged, it must be replaced by the manufacturer, its service agent or similarly qualified persons in order to avoid a hazard.
- Only authorized technicians can disassemble or alter the machine. Never do this yourself due to risk of injuries, fire, or electrical shock.
- Never let children climb up or into the machine due to risk of severe injuries.
- Do not play with or disassemble the button control panel due to risk of malfunction or injuries.
- Only a capable adult should install the machine and perform setup. Do not let children install the machine due to risk of injuries.
- Do not allow children or animals to eat or touch the microorganisms inside the machine due to risk of disease. If a child ingests the microorganisms, rinse their mouth and give them water. Call your doctor or poison control if they begin feeling unwell or showing symptoms of illness.
- Connect the power plug safely; never plug in or touch the socket with wet hands due to risk of electrical shock. Do not have the power cable trapped beneath the machine or exposed to sharp edges due to risk of electrical shock or fire.
- Do not simultaneously use multiple appliances with one electric outlet. This could be a fire risk due to overheating or overload. Power cord and voltage will vary by country.
- Do not put the machine in or around places where it could be exposed to water due to risk of electrical shock or accident.
- Never wash the machine with water due to risk of electrical shock or malfunction.
- Do not clean the machine with combustible materials such as gasoline or paint thinner due to risk of hand injury or malfunction.
- Do not artificially spin the stirring rod on the machine as it could cause a hand injury or malfunction.
- Always keep the machine on. It is equipped with an automatic sleep mode. If traveling for more than two weeks, refer to **page 15** for preparation.

## 02. Meet Reencle Prime

	<h3>Microorganisms</h3>	<p>Reencle Prime is a home food waste composter that uses Reencle's patented microorganisms to break down food waste naturally, and turn it into compost.</p>
	<h3>Stirring Tank</h3>	<p>The inside of Reencle Prime uses temperature regulation and a continuous stirring rod to provide an optimal environment for Reencle's microorganisms. The continuous stirring helps to break down food waste, while the consistent temperature allows the microorganisms to remain active in fermenting and decomposing food waste in a relatively short period of time.</p>
	<h3>Odor Free &amp; Silent</h3>	<p>Reencle is odor free thanks to the three-layer filtering system that incorporates a charcoal filter. The charcoal filter is located on the back of the Reencle Prime receptacle, and can be removed and replaced. Reencle Prime is essentially silent, allowing it to seamlessly integrate into your everyday life.</p>
	<h3>Design</h3>	<p>Reencle is designed to be used indoors, with convenient features. The motion sensor, located in the front of the receptacle, will automatically open the lid when you approach, making it easy to dispose of food waste. There are also features available for drying and purifying contents as well as locking various controls.</p>

## 03. Initial Setup



01

**Unpack your Reencle Prime and place it on a flat surface in a well ventilated area.**

Allow 4-inches (10 cm) between the machine and the back wall for proper ventilation.

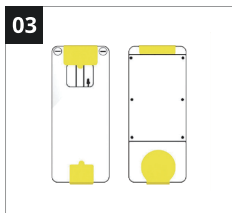
Reencle Prime is designed for indoor use only where temperatures do not fall below 32°F (0°C).

Do not install it in a watery area or where the machine could be exposed to rain.



02

**Remove the Compost Starter bag from the machine, and any other contents from the inside of the stirring tank.**

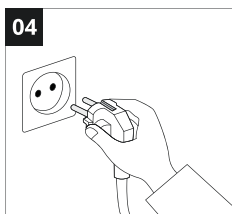


03

**Remove the sticker on the carbon filter.**

Reencle Prime will arrive with the carbon filter already installed. Check your filter for a yellow sticker, and **remove the sticker before using.**

If you ordered an extra carbon filter, store it indoors in a dry place for later use.



04

**Plug in the Reencle Prime and press the power button.**

**05**

**Open the bag of Compost Starter, and pour it all into the stirring tank.**

In it's initial stage, Reencle's Compost Starter contains microorganisms that resemble sawdust with pellets. As it begins to work and culture normally over the next four weeks, it will begin to resemble a brown, soft soil-like texture.

**06**

**Pour 7 cups (50-60 fluid oz) of water into the stirring tank with the Compost Starter. Close the cover.**

**07**

**Let the Compost Starter and water process for 18-24 hours.**

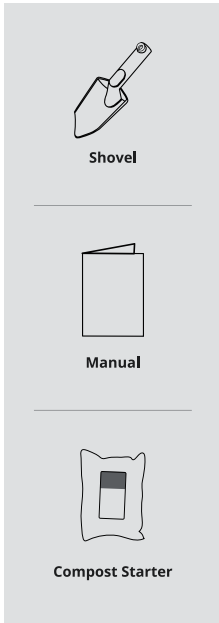
**08**

**After 18-24 hours, you may begin adding food waste to your Reencle Prime.**

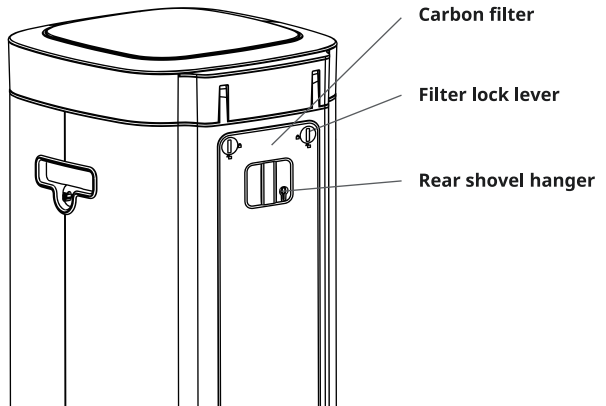
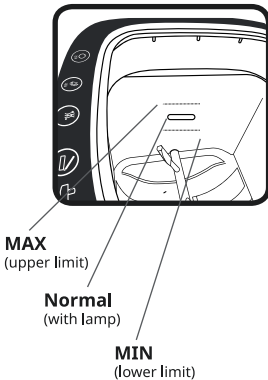
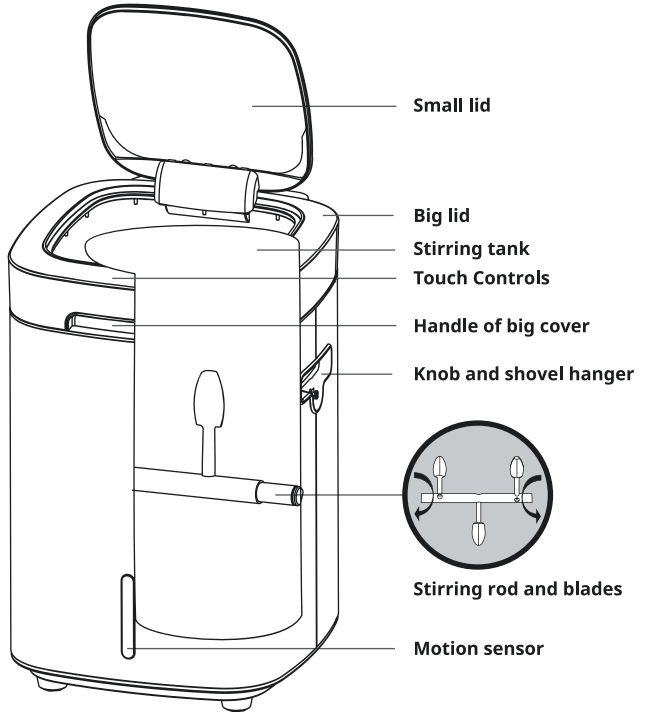
Refer to **page 13** for what is and isn't acceptable food waste.



# 04. Part Names & Features



\* Accessories are placed inside of the appliance



## Control Buttons

Reencle Prime's touch controls are located on the top of the receptacle. Functions are as follows:



### Power

Press the power button to turn on and off the device.

Always keep the power turned on. Reencle is equipped with an automatic sleep mode. In the case of a service or repair, power off first, and then unplug the device.



### Open

Press this button to open the small cover of Reencle to deposit food waste.



### Dry

Press this button when the internal contents of the stirring tank become boggy with too much water.



### Check

Indicates product errors in the product or buttons through flickering LED with alarm sounds.



### Purify

Press this button when you notice a bad odor, to help reduce the smell.



### Lock

The open button includes a Lock feature. How to operate the lock button:

#### 1st Click **Press and hold the lock button for three seconds for the first time:**

A red LED will flash around the lower sensor. This indicates that the automatic sensor is now locked and will not automatically open the small lid. Do open the small lid in this setting, press the "Open" button.

#### 2nd Click **Press and hold the lock button for three seconds for a second time:**

A red LED will remain on the lower automatic sensor, and red LED will turn on around the "Open" button. In this setting, neither the automatic sensor nor the "Open" button will open the small lid.

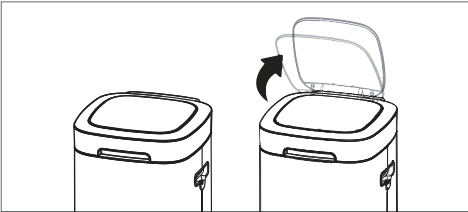
#### 3rd Click **Press and hold the lock button for three seconds for a third time:**

The red lights around the automatic sensor and the "Open" button will turn off, and both the automatic sensor and "Open" button will be unlocked and functional again.

# 05. Ongoing Use & Operations

**Note:** Reencele Prime must be plugged in and powered on for touch button operations to function.

## 01 Open the Small Lid



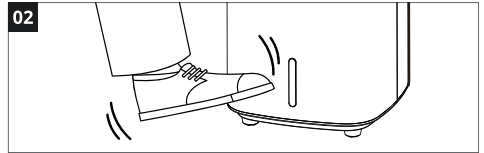
Open the small lid to add food scraps to Reencele Prime stirring tank.

When the small lid is open, the stirring rod will temporarily stop. It will begin automatically stirring again when the lid closes.

You can open the small lid in two ways:



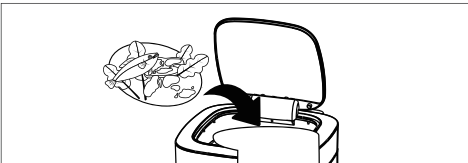
**Open Button:** Press the Open button to open or close the small lid.



**Automatic Sensor:** Approach the front of Reencele Prime slowly, and cover the sensor with your foot (it will detect 12-inches away). Hold your foot in front of the sensor for 2-3 seconds and the lid will automatically open.

*When the sensor is operating, a green light will flash on the front sensor. Depending on the lighting conditions of the installation environment, the sensing speed may differ.*

## 02 Add food scraps to Reencele Prime



Add food waste to Reencele Prime periodically. For larger items (e.g. banana peels, stems), chop into smaller pieces. This will prevent issues with the stirring rod and help food scraps break down faster.

Refer to **page 13** for acceptable and prohibited food waste.

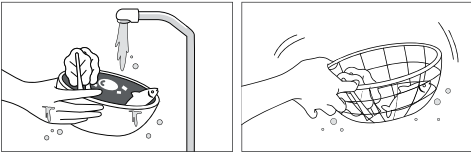
### 03 Properly Maintain Food Waste Input

The optimal daily amount to add to Reencle Prime is **1.5lbs (0.7kg) per day, and a maximum of 2.2lbs (1kg) per day**. Follow this recommendation to ensure the best results.

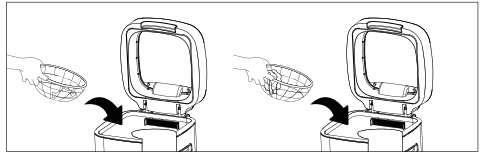
Separate food scraps from general waste to ensure only acceptable food waste goes into Reencle Prime.

Chop up large items, such as banana peels, cabbage leaves, and green onions into smaller pieces.

For larger volumes of scraps, place them into the stirring tank in smaller batches, allowing Reencle Prime to mix between intervals.

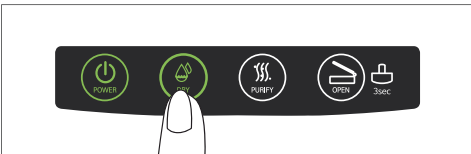


Avoid putting overly salted foods or sauces into Reencle Prime since this can interfere with the decomposition process. If adding foods with sauce or salt, rinse before placing in the Reencle Prime.



For large amounts of watery waste, divide it into smaller portions and feed portions to the Reencle Prime in several batches.

### 04 Manage Internal Contents



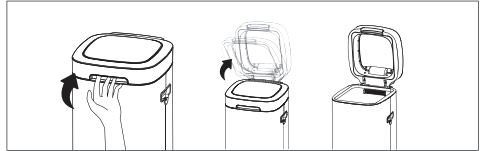
If the contents of the stirring tank become boggy and have too much water, press the “Dry” button and do not add food waste for one or two days or until it becomes dry again.

After food is put in, water droplets may form on the cover due to the temperature difference inside and outside Reencle Prime. These droplets are normal and caused by microbial fermentation so are not a symptom of contents being too wet inside the stirring tank.

After 24 hours, most of the food waste will have been fermented and decomposed.

## 05 Open the Large Lid

Open the large lid when it's time to remove compost from Reencle Prime's stirring tank. Place your hand on the handle, located at the front of the Reencle Prime, and gently pull it upward. The large lid will open for access to contents inside the stirring tank.



When the large lid is open, the stirring rod will temporarily stop if the power is on. It will begin automatically stirring again when the lid closes. However, before removing compost, power off the Reencle Prime machine using the Power button to ensure safety.

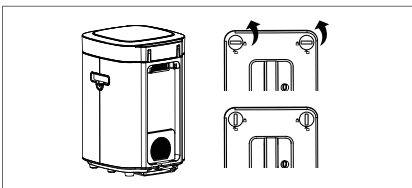
Once the decomposed waste reaches the limit line, noted on the interior of the stirring tank, use the included shovel to scoop out the compost until the inner contents reach the minimum line. Always leave the stirring tank filled to the "MIN" line in order to continue the microorganisms fermentation and decomposition process in place.

Moisture and any odors are emitted in the form of purified vapor air through the bottom of the Reencle Prime via the automatic dehumidification function.

## 06 Tips for Proper Care of Reencle Prime

Before putting food waste into the Reencle Prime, rinse the food with running water and pat it dry. This ensures optimal performance for the fermentation and decomposition process.

Frequently clean the mesh filter, located inside the stirring tank, using a cleaning brush. The mesh filter can be removed, washed with water, and placed in the Reencle Prime again.



The purifier filter, located on the back of Reencle Prime, should last up to 9-12 months. To remove the purifier filter, rotate the two plastic screws on both sides counter-clockwise to the unlock position, and remove the filter. To reinstall, place the new filter in the same position, insert the plastic screws, and rotate clockwise to the lock position. To purchase a purifier filter, please visit Reencle's website or contact Reencle through Facebook.

**If you will not use the Reencle Prime for an extended period of time (1 month or more), take the following steps:**

- 01 -** Stop adding food waste to the Reencle Prime, and allow it to fully decompose all the food waste.
- 02 -** Unplug the Reencle Prime, scoop out all of the byproduct from the stirring tank, and place it in a well-sealed container. Store the byproduct in a well-ventilated area, avoiding placing it in sunlight. The byproduct can be reused when you return.

# 06. Acceptable & Prohibited Food Waste

## ✓ Acceptable Food Waste:

**Decomposition Time**  
< 24 hours



Protein



Cooked Egg



Fruit



Grains



Nuts



Cooked Vegetables



Legumes



Cheese



Carbohydrates



Spreads  
*(e.g. butter, jam)*



Eggshells



Coffee Grounds



Pizza Crust



Watermelon Rind



Raw Vegetables  
*(e.g. carrots, corn, cucumbers, cabbage)*



Sausage, Salami



Spreads *(e.g. peanut butter, nutella)*



Stems, Roots *(e.g. chives, onions)*

> 24 hours

## ⚠ Prohibited Waste:



Bones



Shells



Pits *(e.g. avocado, plum)*



Solid Shells *(e.g. walnut, pomegranate)*



Plastic



Rubber



Glass



Medicine



Cleaners, Chemicals



Cigarettes



Produce Stickers



Biodegradable Containers, Flatware



Tape



Cardboard

# 07. Managing Microorganisms

## Byproduct/Compost

### Managing the Microorganisms.

Microorganisms resemble sawdust at the initial stage. If normally cultured for four weeks, the microorganism mix will turn a brownish color and look like soil with a soft texture.



### What is a by-product?

5% of food waste consists of non-biodegradable materials. Since these minerals decompose slowly, the amount of microorganisms increase in volume over time. This is called byproduct.

The byproduct can be used as eco-friendly compost for plants, yards, tree beds, and gardens, or discarded as general waste.

### How to use Reencle-Compost for both indoor & outdoor plants.

Remember, the more mature the compost, the better the outgrowth. The longer you allow the compost to decompose, the better output you'll have.

Before removing the compost, run Reencle Prime without any additions (food scraps) for a minimum of 48 hours to make sure all organic wastes are fully decomposed.

Then, remove compost with the included scoop, leaving the bin at least 1/3 full.

Sift the compost to remove any large pieces that haven't yet decomposed, and return those pieces to the Reencle Prime.

Mix compost with soil. Use the following ratio: 1 part compost to 4 parts soil. It is highly recommended to mix a large amount of soil before using your compost.

Let the compost mix rest and cure for at least three weeks in a breathable container or bag. You'll know the compost is ready when it resembles a dark, crumbly top soil and has an earthy smell.

### What are the White Molds?

It's ok if you notice white molds on your compost. Your compost is still ok to use.

Reencle makes compost from leftover food waste materials. During this process, some substances like lignin and glucose don't break down easily. White germs called actinomycetes help to break down these substances.

Compost with enough of these germs can help plants grow and keep away harmful pathogens.

Your compost should have an "earthy" smell. If there is a sour odor, your compost needs to cure longer.

---

## 08. Frequently Asked Questions

---

**Q. There is condensation on the inner surface of the cover and on the inner sides of the product.**

The internal temperature of the product is set to be maintained at 122 to 140 degrees Fahrenheit (50-60 degrees Celsius), which is suitable for culturing microorganisms. When 6-7 cups of water is initially added, or in the course of general food decomposition, condensation may occur on the cover and the inner walls due to the difference between the internal and external temperature. Condensation is a natural phenomenon and is not considered to be a problem.

**Q. Mold has grown on the inner walls and over the microorganisms.**

Mold is often found over the microorganisms, inner sidewalls, and the stirring rods, but has nothing to do with microorganisms. Use the shovel provided to mix it with the byproduct inside the stirring tank and the mold will disappear after a few hours as they are decomposed with the mixture. **Keeping the interior walls clean will help prevent mold.**

**Q. Microbes have accumulated and set on the corners and walls of the tank.**

The stirring rod rotates near the center of the product. Although it mixes most microorganisms, byproduct may collect in the corners, leaving microbes to accumulate on the corners and walls. Use the provided shovel to scrape these microbes and mix them with the mixture before adding food.

**Q. If I am away from home for days, do I need to take any special measures?**

- If you are away from home for less than 7 days, use Reencle as you normally would, and refrain from putting food in the Reencle Prime for two days before your departure.
- If you will be away from home for more than 7 days, refrain from putting food in the Reencle Prime 2 days before departure to ensure it completely decomposes the existing waste in the bin before you leave. On the day of departure, turn off the product and unplug the power cord.
- You do not need to remove the byproduct/microorganisms from Reencle Prime. Simply leave it closed. When you return, turn on the Reencle Prime, add two cups (16.9 oz) of water to the mixture and leave it for 4-6 hours before starting to use it again.

**Q. Microorganisms agglomerate (clump).**

The aggregation of the microorganisms found inside of the product indicates insufficient decomposition of the microorganisms. Give them more time for decomposition and do not add additional waste into the Reencle Prime. After the microorganisms return to their original form, which may look like soil, it indicates that it is ready again to decompose the food.



**Q. Microorganisms have a bad odor.**

- The smell of microorganisms depends on the type of food you put in. In case of strong odors, add bread and wait to add any other food waste for at least 1-2 days.
- Using the dry mode for one day helps to dry the microorganisms. With the microorganisms further dried, add a shovel of coffee grounds or pieces of bread with food waste to help neutralize the odor.

**Q. The microorganisms look greasy.**

- If the microorganisms are greasy or if the mixture is oily, the microorganisms will not be able to decompose normally. In this case, you will likely need to replace your microorganisms. Please send Reencle a message through Facebook to place an order a replacement.
- Greasy microorganisms may also occur when oil, butter, fat from meats and other oily/greasy food are processed, especially when a large amount of food is processed together. To avoid this, refrain from adding too much food.

**Q. Do the microorganisms die if there is no food put in?**

No, Reencle's uses a patented microorganisms mix that temporarily converts into a spore state (sleep state) in case food input ceases. It does not die easily. However, the state of the microorganisms may deteriorate, and in such cases, please contact the customer service center with a video attached in order to receive help on restoring the microorganisms.

**Q. Do the microorganisms need to be frequently purchased/replenished?**

No, the microorganisms go through autosynthesis over time and as long as you follow the guidelines to ensure decomposition goes smoothly, there is no need to make additional purchases. Just make sure to at least the minimal levels of microorganisms when scooping them out.

**Q. Can I put in solid or frozen foods?**

- Frozen foods may cause the microorganisms to enter a spore state (sleep state) and may cause deterioration to the state of the microorganisms because they lower the temperature inside Reencle. Moreover, the stiffness of frozen foods makes them hard to decompose and may also cause damage to the stirring rod inside of the Reencle.
- Please make sure to thaw frozen foods before putting them inside of the Reencle and refrain from putting in solid foods.

**Q. Does Reencle stop functioning when the cover is opened?**

For safety measures, the stirring rod functions only when the covers are closed.

---

**Q. What should I do when the microorganisms are dry?**

- The inside of Reencle Prime consists of heat insulating materials, keeping the condition ideal for the microorganisms to decompose foods when in operation. Therefore, if the food input is little to none, the inside of the Reencle Prime may become dry. When dry, Reencle Prime may cause noises. In this case, the inner walls of the Reencle may also become soiled with particles, the filter contaminated, and powders may be released to the air.
  - When dry, input additional food waste or 2-4 cups (500~900ml) of water in order to prevent friction within the Reencle.
- 

**Q. How do I clean the Reencle?**

Do not clean/rinse Reencle Prime with water. Mechanical breakdowns may occur from cleaning Reencle with water, and expenses may occur. If the inner walls of the Reencle Prime is soiled with particles, wipe the walls with a wet wipe.

---

**Q. What are the black fragments in the microorganisms?**

The black fragments are activated carbons. Do not remove them as they serve the purpose of providing a steady supply of oxygen to the microorganisms during the initial stages of cultivation, as well as deodorizing. Activated carbons help the young microorganisms adapt faster to the environment inside, but lack of activated carbons does not affect the decomposing capabilities.

# 09. Replacement Alerts & Warnings

## Alerts, indications, and responses

Alert / Indication	Issue	Action
Open button blinks / Alarm at 10 second intervals	Lid is open	Check and close the lids
Purify button blinks / Alarm at 10 second intervals	Fan motor problem	Contact customer center
Dry button blinks / Alarm at 10 second intervals	Drum heater problem	Contact customer center

*\*When a product malfunction occurs, please contact our Customer Center for support.*

*\*The company is not responsible for any accident caused by non-designated person repairing or altering the machine.*

## Customer Service

Please contact our customer service representatives regarding return, exchange or refund of Reencle. Reencle representative for a return, exchange or refund.

Products purchased outside of Reencle (authorized reseller channels or distributor) should contact the channel you have purchased or Reencle representative for a return, exchange or refund.

## Contact Information



**Email**  
info@reencle.co



**Facebook**  
facebook.com/reencleus



**Instagram**  
reencle\_global

# 10. Warranty & Specifications

## WARRANTY

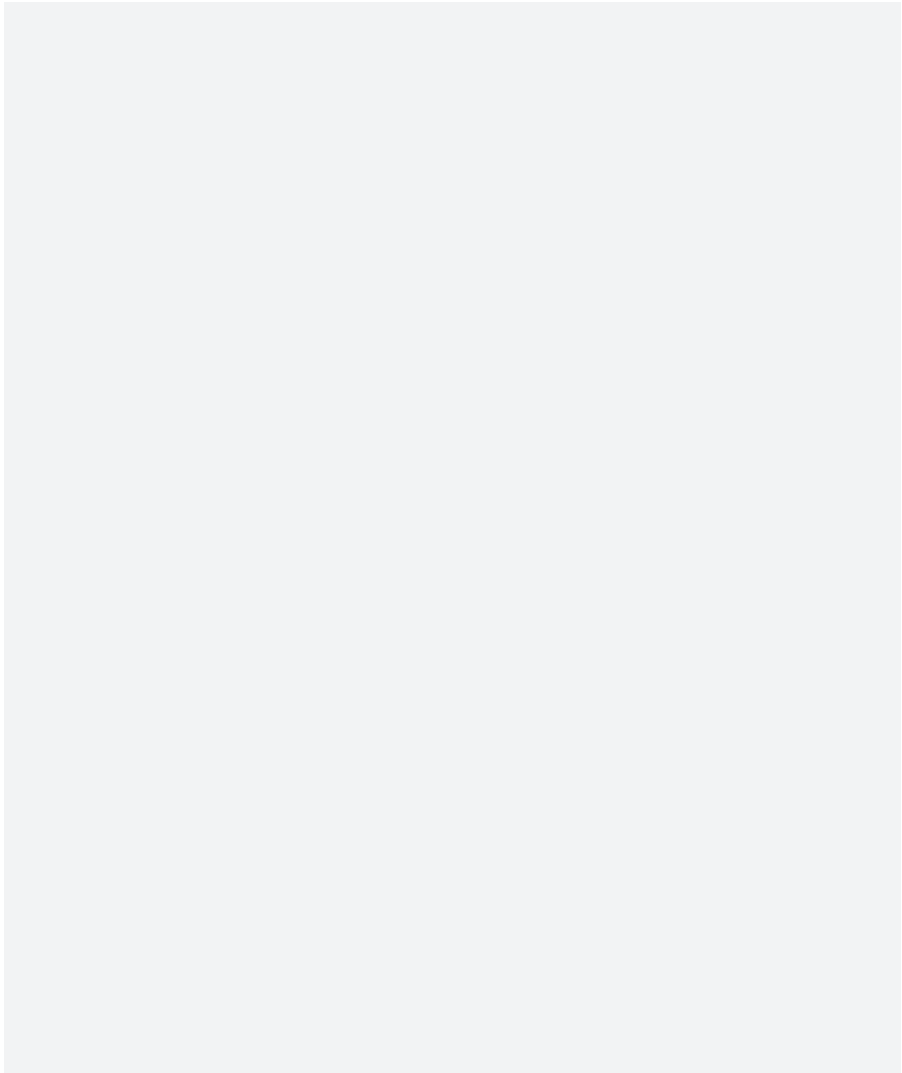
<b>Product Name</b>	Food Waste Composter	Warranty Period       1 year from the date of purchase
<b>Model Name</b>	Reencle Prime	
<b>Production No.</b>		
<b>Purchase Date</b>		
<b>Purchase Form</b>		
<b>Customer Address</b>		
<b>Customer Name</b>		
<b>Customer Phone</b>	Until _____	

- Warranty period: 1 year
- In accordance with criteria notified by the Fair Trade Commission, the warrant for the product is as follows. Requested services are processed either by the company's customer center or by designated authorized dealer.
- Free warranty period for the product is one year, starting from the date of purchase, so make sure the date is filled out. (When the date of purchase is unavailable, the warranty period starts from the day six months after the date of manufacture)
- This warranty will not be reissued, so please keep it in a safe place within this manual.

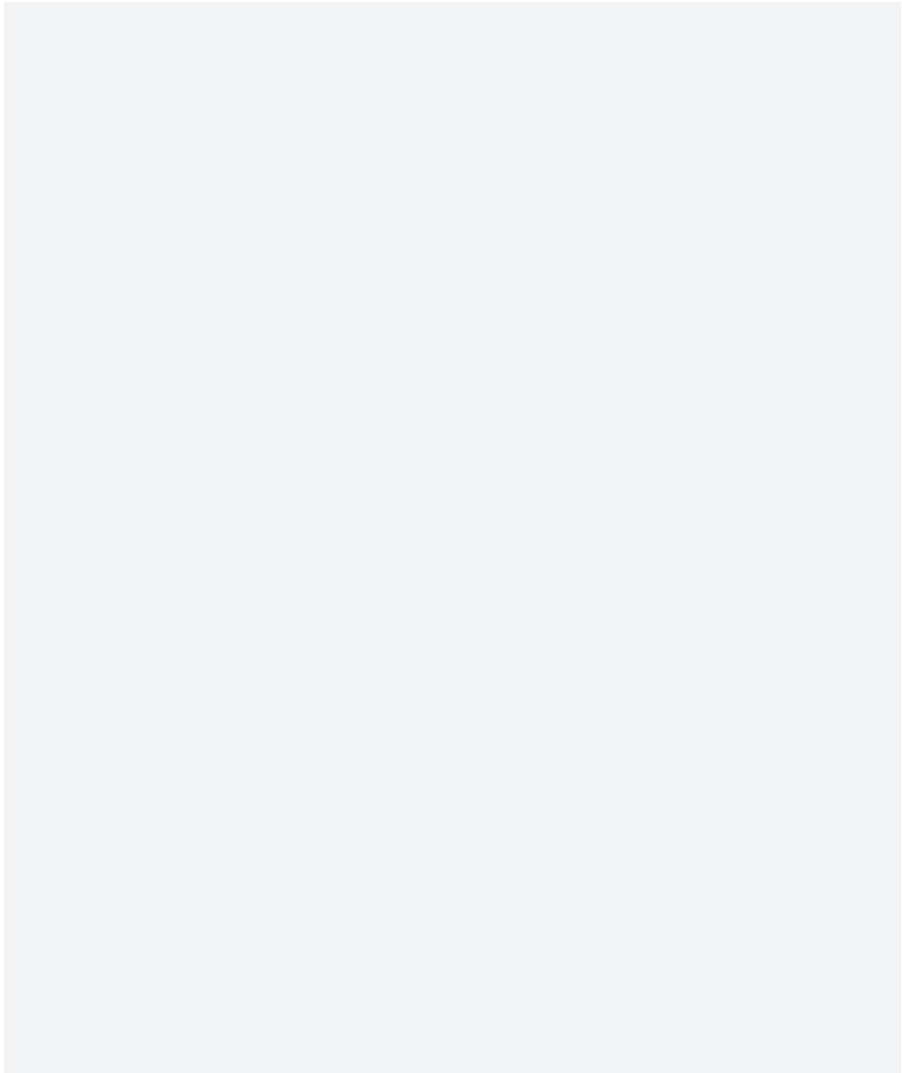
## SPECIFICATIONS

<b>Processing Type</b>	Fermentation/composition by microorganisms
<b>Size</b>	18.4" (H) x 13" (W) x 12" (D)
<b>Weight</b>	20.1 lbs (9.1Kg)
<b>Decomposition Capacity</b>	Recommended 1.5 lbs (0.7kg) per day, Max 2.2 lbs (1kg) per day
<b>Rated Voltage</b>	AC 120V, 60 Hz
<b>Power Consumption</b>	Max 130W
<b>Noise Level</b>	Less than 30dB
<b>Purifying Method</b>	Carbon Filter

# Memo



# Memo







**Manufacturer**

186 Golden Route-ro, G7 Block, Golden Route Industrial Complex,  
Juchonmyeon, Gimhae-si, Gyeongsangnam-do, Korea

T 055-337-0380 | F 055-337-0461 | W [www.hanmiflex.com](http://www.hanmiflex.com)

